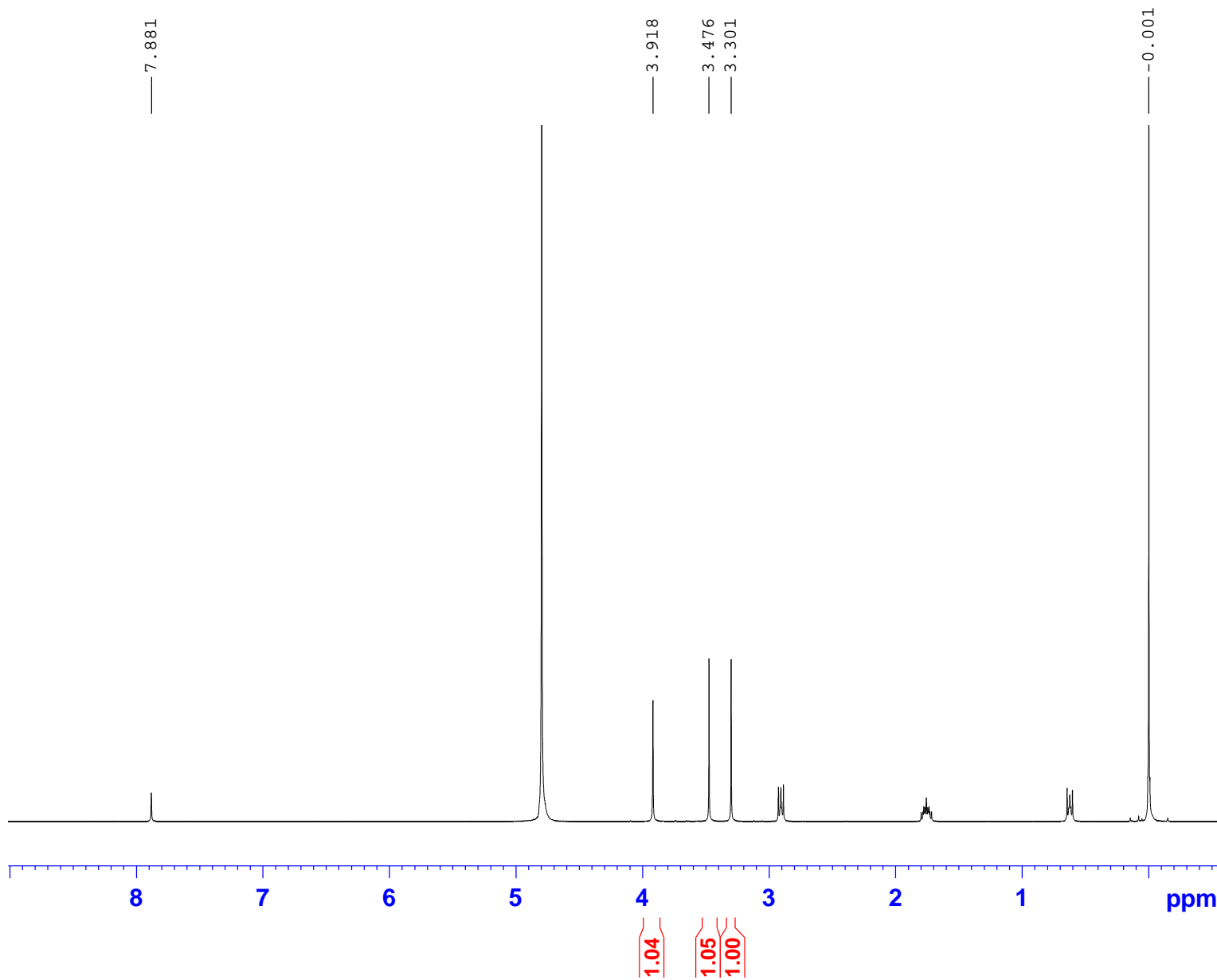


Proton Standard



Current Data Parameters
NAME tgf
EXPNO 11
PROCNO 1

F2 - Acquisition Parameters
Date_ 20121102
Time 7.30
INSTRUM spect
PROBHD 5 mm PABBO BB/
PULPROG zg
TD 32768
SOLVENT D2O
NS 4
DS 0
SWH 6393.862 Hz
FIDRES 0.195125 Hz
AQ 2.5624576 sec
RG 44.31
DW 78.200 usec
DE 6.50 usec
TE 296.5 K
D1 6.00000000 sec
TD0 1

==== CHANNEL f1 =====
SFO1 399.7827985 MHz
NUC1 1H
P1 8.65 usec
PLW1 35.97499847 W

F2 - Processing parameters
SI 65536
SF 399.7799619 MHz
WDW EM
SSB 0
LB 0.30 Hz
GB 0
PC 10.00