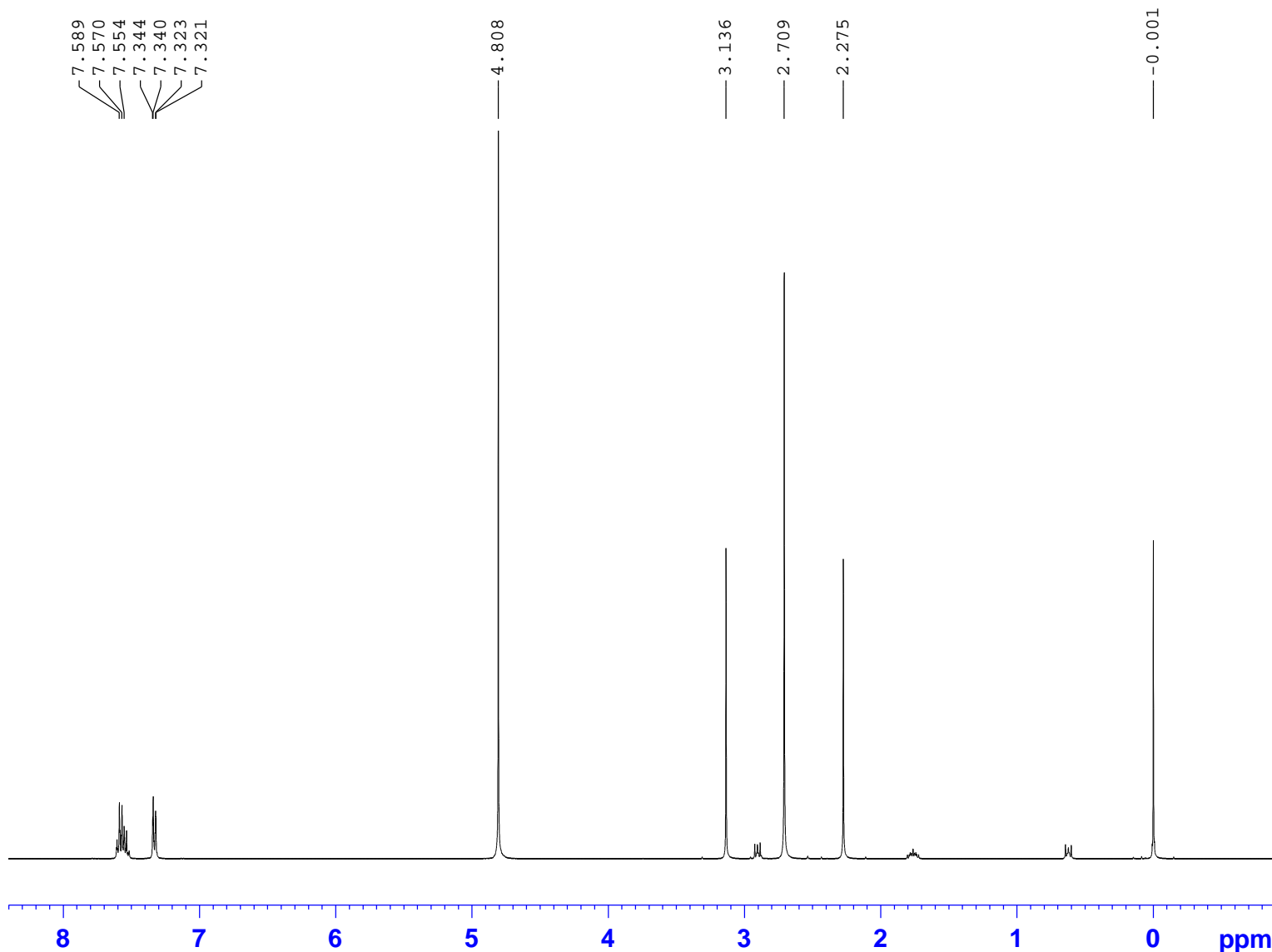


Proton Standard



Current Data Parameters
 NAME tgf
 EXPNO 10
 PROCNO 1

F2 - Acquisition Parameters
 Date_ 20121102
 Time 7.23
 INSTRUM spect
 PROBHD 5 mm PABBO BB/
 PULPROG zg
 TD 32768
 SOLVENT D2O
 NS 4
 DS 0
 SWH 6393.862 Hz
 FIDRES 0.195125 Hz
 AQ 2.5624576 sec
 RG 44.31
 DW 78.200 usec
 DE 6.50 usec
 TE 296.8 K
 D1 6.00000000 sec
 TD0 1

==== CHANNEL f1 =====
 SFO1 399.7827985 MHz
 NUC1 1H
 P1 8.65 usec
 PLW1 35.97499847 W

F2 - Processing parameters
 SI 65536
 SF 399.7799582 MHz
 WDW EM
 SSB 0
 LB 0.30 Hz
 GB 0
 PC 10.00