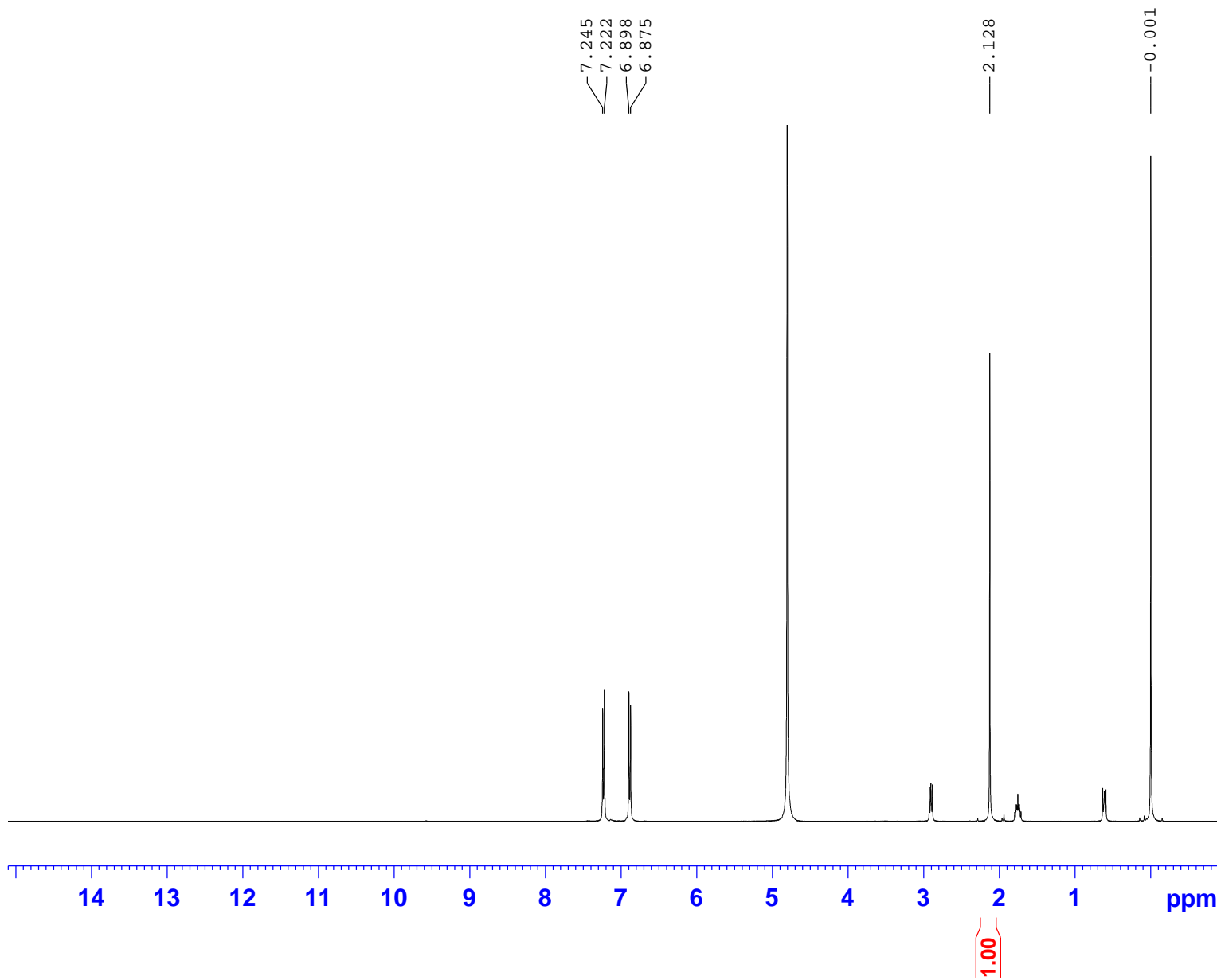


Proton Standard



Current Data Parameters  
NAME tgf  
EXPNO 14  
PROCNO 1

F2 - Acquisition Parameters  
Date\_ 20121102  
Time 7.49  
INSTRUM spect  
PROBHD 5 mm PABBO BB/  
PULPROG zg  
TD 32768  
SOLVENT D2O  
NS 4  
DS 0  
SWH 6393.862 Hz  
FIDRES 0.195125 Hz  
AQ 2.5624576 sec  
RG 44.31  
DW 78.200 usec  
DE 6.50 usec  
TE 296.3 K  
D1 6.00000000 sec  
TD0 1

==== CHANNEL f1 =====  
SFO1 399.7827985 MHz  
NUC1 1H  
P1 8.65 usec  
PLW1 35.97499847 W

F2 - Processing parameters  
SI 65536  
SF 399.7799586 MHz  
WDW EM  
SSB 0  
LB 0.30 Hz  
GB 0  
PC 10.00